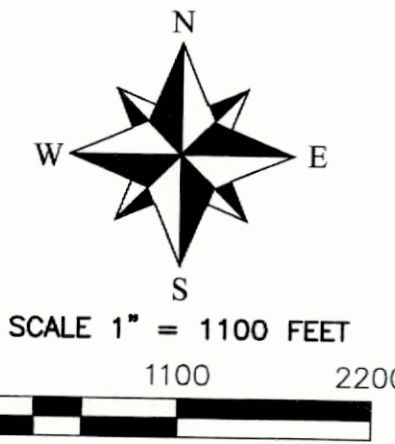
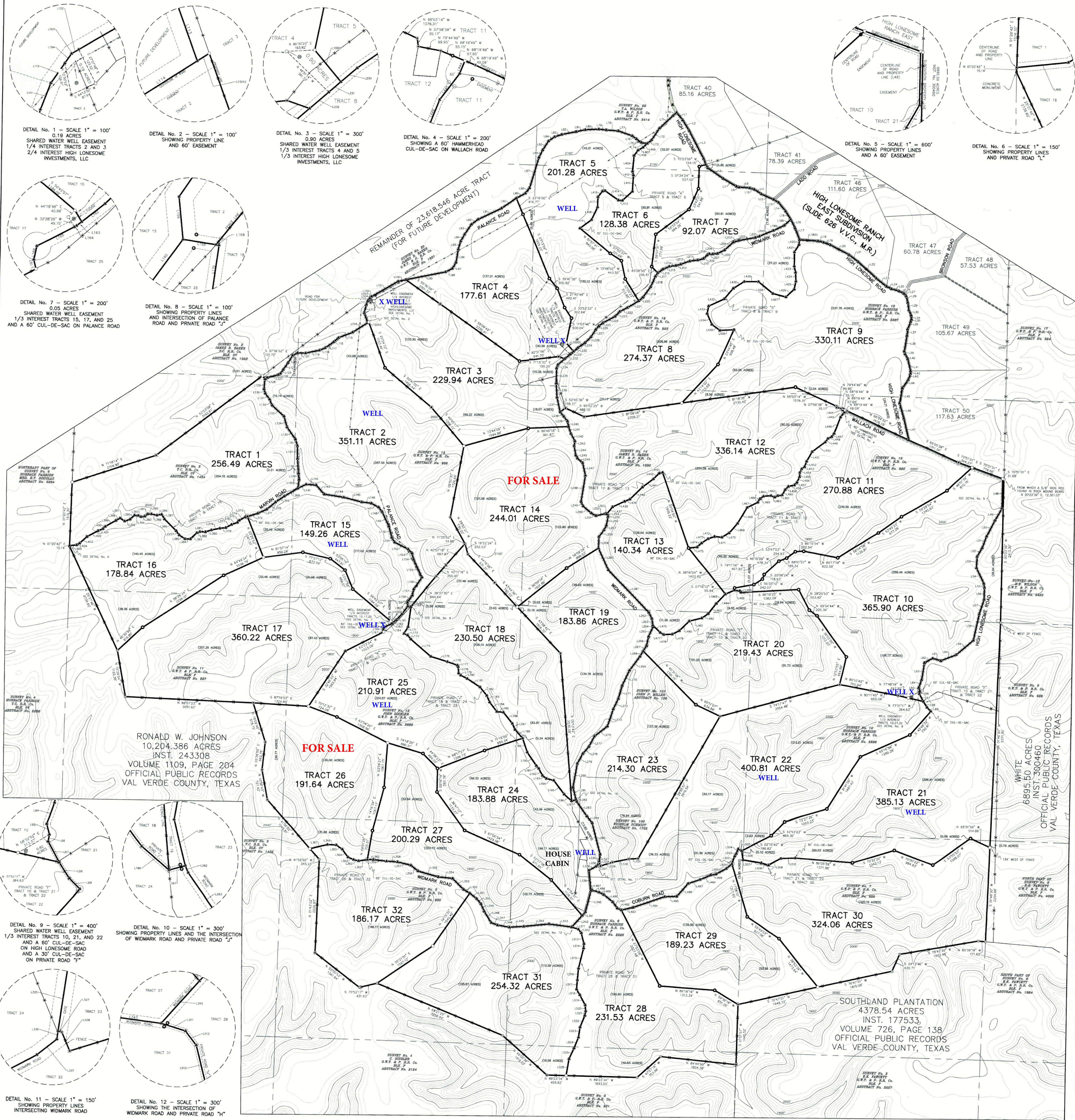


*Final Plat of*  
*High Lonesome Ranch South Subdivision*



This plat represents a boundary survey only. Some easements and utilities have been shown, but there may be others recorded or unrecorded that may exist. Always use the Texas One Call System or [www.texas811.org](http://www.texas811.org), before performing any excavations. Record information for adjoining land owners shown hereon is for visual information purposes only.

Basis of Bearings

Bearing Basis hereon is Texas State Plane Coordinate System, Reference Frame North American Datum 1983 (2011) (EPOCH 2010.00000), as determined from Global Navigation Satellite System (GNSS) survey equipment by Static, Virtual Reference System (VRS) network and *or* Real Time Kinematic (RTK).

Distances shown hereon are shown as grid Texas State Plane Coordinate System distances.

---

---

LEGEND	
○ SET 1/2" IRON ROD W/ ALUMINUM CAP	OUTER SUBDIVISION BOUNDARY
● SET 1/2" IRON ROD W/ PLASTIC CAP	TRACT BOUNDARY
○ SET 3/4" MAG NAIL WITH WASHER	ADJACENT PROPERTY LINE
● FOUND IRON ROD	EASEMENT
■ WOOD FENCE POST	SUBDIVISION ROAD RIGHT-OF-WAY
● PIPE FENCE POST	WIRE FENCE
● POINT	SURVEY LINE
	OVERHEAD ELECTRIC LINE
— ONE — ONE —	20' CONTOUR LINE
	100' CONTOUR LINE
	○ <sup>TD</sup> POWER POLE
	○ WATER WELL
	O.P.R. OFFICIAL PUBLIC RECORD
	D.O.R. DEED RECORDS
	M.R. MAP RECORDS
	V.V.C. VAL VERDE COUNTY

<b>MQI</b> LAND SURVEYING	FIRM NO. 10194241 P.O. BOX 3506 SAN ANGELO, TEXAS PHONE: (325) 939-0043 EMAIL: info@mqibx.com Copyright 2022 All Rights Reserved	FIELD: GS WP OFFICE: GS JM JOB NO.: 21050113	SHEET 2 OF 3
	(This area is reserved for the printer's use.)		

---